

0CNP2-M41100EN

Directions for the Parts Catalog.

1. This Parts Catalog shows both standard and optional parts.
2. Parts may change without prior notice.
3. The following is an example of the Parts Catalog format.

REF.	LEV.	PARTS NO.	DESCRIPTION	Q'TY						I	R
				(A)	(B)	(C)	(D)	(E)	(F)		
1	1	729595-51390	FUEL INJECTION PUMP	1	1	1	1	1			1
1-1	1	729595-51391	FUEL INJECTION PUMP	1	1	1	1	1		N	1
		(A=E00185) (B=E00200)									
3	2	26022-060162	SCREW M 6X 16	9	9	9	9	9			
3-1	2	26022-060162	SCREW M 6X 16	4	4	4	4	4		K	
		(A=E00156) (B=E00156) (C=E00156) (D=E00156) (E=E00156)									
4	2	129470-51040	CAMSHAFT	1	1	1	1	1			
5	2	122710-51050	BEARING, ROLLER	2	2	2	2	2			
6	2	129470-51060	RETAINER	1	1	1	1	1			

Remarks
(1) BOOST COMPEMSATOR TYPE. OPTIONAL PART, TO E00155,(4JH-DT, 4JH-DTZ

① Ref. No.

The Ref. No. listed may not be in accordance with the illustration Ref. No.

(Ex.) Illustration No.

List Ref No.

1

1

(Before change)

1-1

(After change)

For interchangeable symbols N, R and K, illustrations for new parts may be abbreviated.

② Lev. (Level)

Level indication

The numbers below indicate the level of relativity towards the main part.

1 ----- Main parts (Assembly parts)

2 ----- Sub component included in " 1 ".

3 ----- Sub component included in " 2 ".

Note) Parts that are not for sale are partially illustrated but not listed.

③ Interchangeability Symbol

When a part change takes place, one of the following interchangeability symbols is indicated beside the part.

Symbol	Interchangeability	Contents note
N	Old $\begin{matrix} \leftarrow \text{Yes} \\ \text{No} \rightarrow \end{matrix}$ New	New Part is interchangeable for Old Part but Old Part is not interchangeable for New Part.
Q	Old $\begin{matrix} \leftarrow \text{No} \\ \text{Yes} \rightarrow \end{matrix}$ New	New Part is not interchangeable for Old Part but Old Part is interchangeable for New Part.
R	Old $\begin{matrix} \leftarrow \text{Yes} \\ \text{Yes} \rightarrow \end{matrix}$ New	New/ Old Parts are both interchangeable.
S	Old $\begin{matrix} \leftarrow \text{No} \\ \text{No} \rightarrow \end{matrix}$ New	New/ Old Parts are both not interchangeable.
W		Part newly added.
Z		Part discontinued.
F		Not interchangeable by a single part but interchangeable together with related parts.
K		Changes only for used parts quantities.

④ Effective Machine No.

When a part changes, the effective Machine No. will be indicated in the (A)-(F) column.

Product Symbol	Product No.	Product Symbol	Product No.
C	Clutch No. Compressor No.	F	Machine No. (Agricultural Equip.)
D	Drive No.	M	Machine No.
E	Engine No.		

Note 1) A date may follow the symbol. (Ex.) 1996.01

Note 2) "XXXXX" and "ZZZZZ" are for parts that could not be predicted or for engine models that could not be identified.

Note 3) (A=E00185) is the E (Engine Serial Number) for the column (A) model (in this case 4JH-DT) after the parts design change.

⑤ Remarks

Figures or alphabets (symbols) are entered in the remarks column.

The comments (remarks) on parts that are indicated at the bottom of the illustration are the same symbols as those stated above.

PAINTING COLOR

SECTION	PAINTING COLOR	COLOR SPRAY	MAIN PARTS	COLOR CODE (FIGURE)
Main body	YANMAR Red 1	T:0 R:-9:0:4:0:0:0:0:3	Handle CMP	5 0
Main body	YANMAR White	T:0 R:-9:0:2:5:0:0:0:2	Fender	1 4
Main body	YANMAR Plan silver M	T:0 R:-9:0:3:1:0:0:0:3	Engine frame CMP	1 9

Please surely use **YANMAR** Genuine color spray any **YANMAR** agricultural machines.

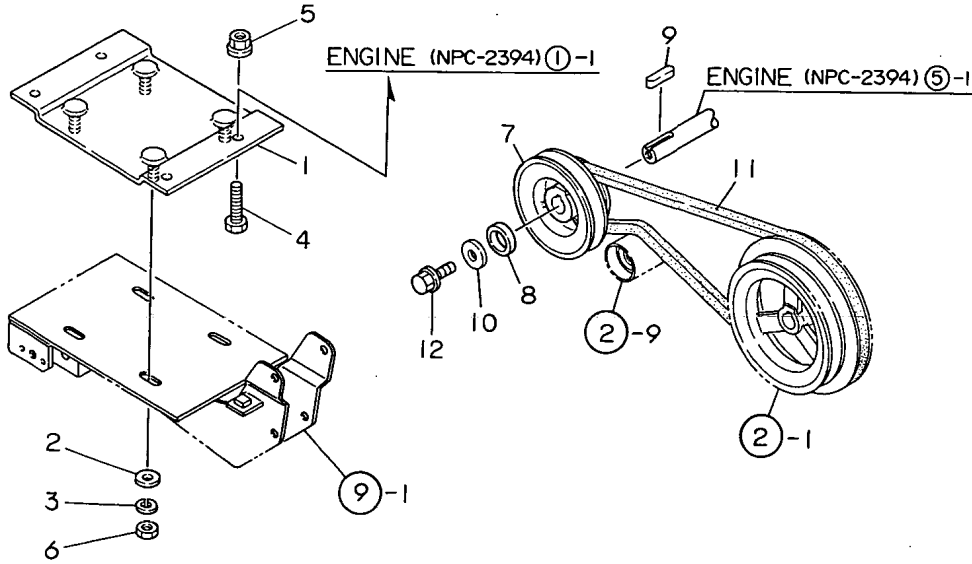
Given painting color may be altered for improvement, etc. without prior notice.

Contents

Fig. No.	Fig. Name	Fig. No.	Fig. Name
PULLEY & TENSION SECTION		14.	LABELS
1.	ENGINE MOUNTING & PULLEY	15.	TOOLS
2.	MAIN PULLEY & TENSION		
TRANSMISSION UNIT			
3.	TRANSMISSION CASE		
4.	TRANSMISSION INTERIOR		
5.	CHANGE		
WHEEL SECTION			
6.	FENDER		
HANDLE SECTION			
7.	HANDLE		
8.	TRAVELING CONTROL LEVER		
16.	ROTOR SHAFT		
ENGINE FRAME SECTION			
9.	ENGINE FRAME		
10.	HITCH		
11.	HANDLE COVER		
12.	BONNET		
LABELS & ACCESSORIES SECTION			
13.	ELECTRICAL PARTS		

Fig.1. ENGINE MOUNTING & PULLEY

1. ENGINE MOUNTING & PULLEY



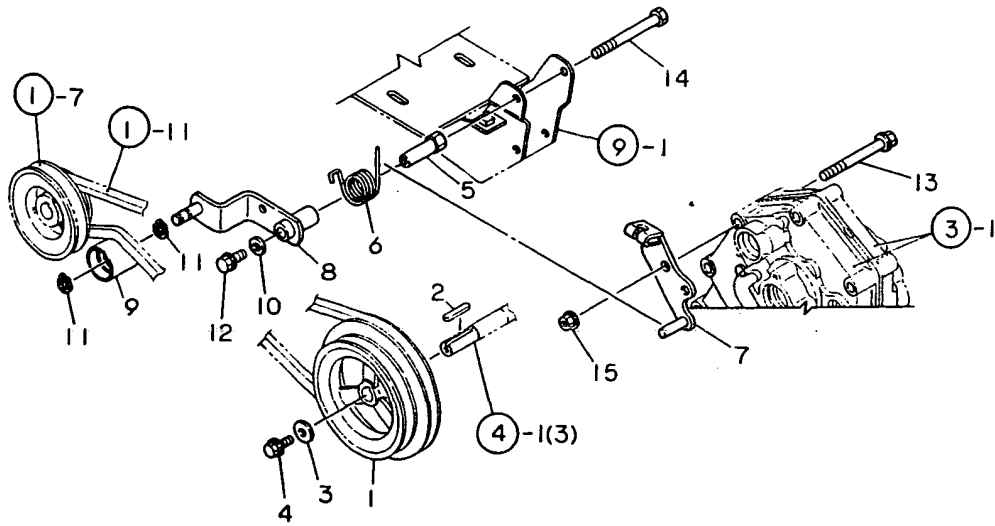
(A)=YK322
(B)=YK322E
(C)=YK322P

(D)=
(E)=
(F)=

No.	Lev.	Parts No.	Description	Q'ty						I	R
				(A)	(B)	(C)	(D)	(E)	(F)		
1	1	1A2130-11100	BASE COMP.,GA90	1	1	1					
2	1	22137-080000	WASHER, 8	4	4	4					
3	1	22217-080000	WASHER, SPRING 8	4	4	4					
4	1	26117-080352	BOLT M 8X 35 PLATED	4	4	4					
5	1	26367-080002	NUT, M8	4	4	4					
6	1	26717-080002	NUT, M8	4	4	4					
7	1	1A2090-12000	PULLEY,ENGINE	1	1	1					
8	1	1A2099-12010	COLLAR 15X22X5.5	1	1	1					
9	1	22550-040201	KEY, 4X 20	1	1	1					
10	1	1C6020-73090	WASHER, 7X19X1.6	1	1	1					
11	1	25122-003101	V-BELT, A31H	1	1	1					
12	1	26107-060122	BOLT M 6X 12 PLATED	1	1	1					

Fig.2. MAIN PULLEY & TENSION

2. MAIN PULLEY & TENSION



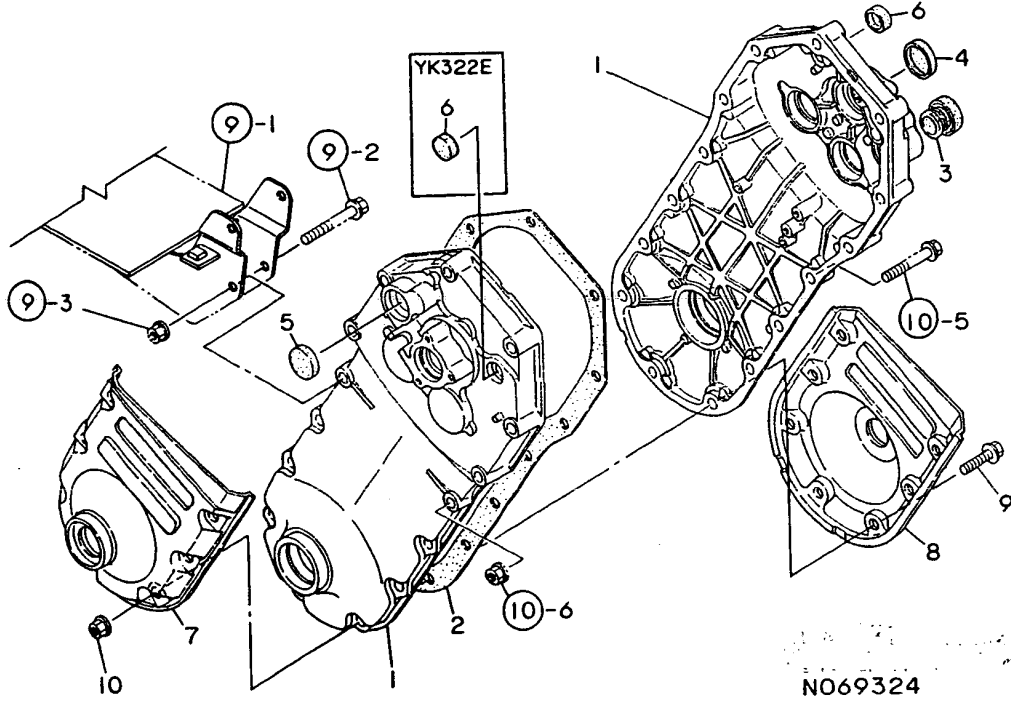
(A)=YK322
(B)=YK322E
(C)=YK322P

(D)=
(E)=
(F)=

No.	Lev.	Parts No.	Description	Q'ty						I	R
				(A)	(B)	(C)	(D)	(E)	(F)		
1	1	1A1540-11000	PULLEY,MAIN SHAFT	1	1	1					
2	1	1A1400-16800	KEY 4X4X30,FEATHER	1	1	1					
3	1	1C6020-73090	WASHER, 7X19X1.6	1	1	1					
4	1	26107-060122	BOLT M 6X 12 PLATED	1	1	1					
5	1	1A2090-13030	NUT,TENSION	1	1	1					
6	1	1A2000-13190	SPRING,TENSION RETRN	1	1	1					
7	1	1A2099-13400	BRACKET COMP.,OUTER	1	1	1					
8	1	1A2099-13500	ARM COMP.,TENSION	1	1	1					
9	1	1A1540-14000	ROLLER COMP,TENSION	1	1	1					
10	1	22137-080000	WASHER, 8	1	1	1					
11	1	22242-000100	RING, 10	2	2	2					
12	1	26107-080162	BOLT M 8X 16 PLATED	1	1	1					
13	1	26107-080702	BOLT M 8X 70 PLATED	1	1	1					
14	1	26117-080752	BOLT M 8X 75 PLATED	1	1						
14-1	1	26107-080702	BOLT M 8X 70 PLATED	1	1	1					R
15	1	(A=F000101) (B=F000101) 26367-080002	NUT, M8	1	1	1					

Fig.3. TRANSMISSION CASE

3. TRANSMISSION CASE



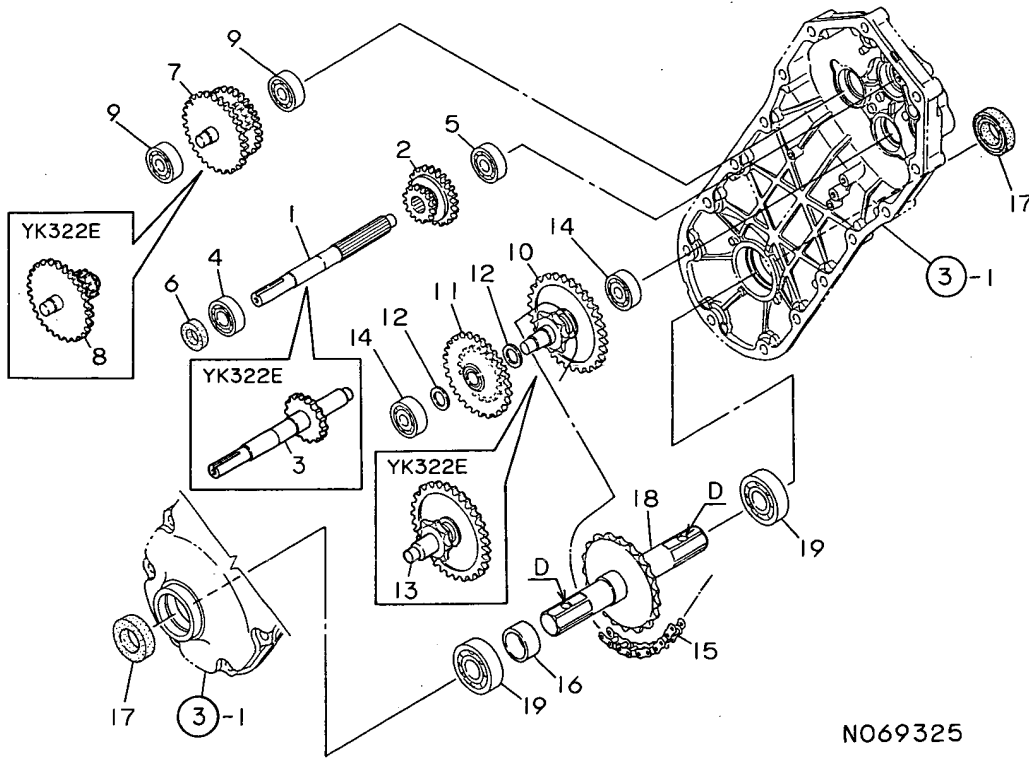
(A)=YK322
(B)=YK322E
(C)=YK322P

(D)=
(E)=
(F)=

No.	Lev.	Parts No.	Description	Q'ty						I	R
				(A)	(B)	(C)	(D)	(E)	(F)		
1	1	1A1750-20010	CASE, TRANSMISSION	2	2	2					
2	1	1A1750-20030	PACKING, TRANSM CASE	1	1	1					
3	1	1A1470-20090	CAP 35, OIL FILLER	1	1	1					
4	1	1A1750-20410	CAP 30X5, SEAL	1	1	1					
5	1	1A1750-20421	CAP 26X6, SEAL	1	1	1					
6	1	1A1750-20431	CAP 18X7, SEAL	1	2	1					
7	1	1A1860-20440	COVER L COMPL	1	1	1					
8	1	1A1860-20450	COVER R COMPL	1	1	1					
9	1	26107-080252	BOLT M 8X 25 PLATED	7	7	7					
10	1	26367-080002	NUT, M8	7	7	7					

Fig.4. TRANSMISSION INTERIOR

4 . TRANSMISSION INTERIOR



(A)=YK322
(B)=YK322E
(C)=YK322P

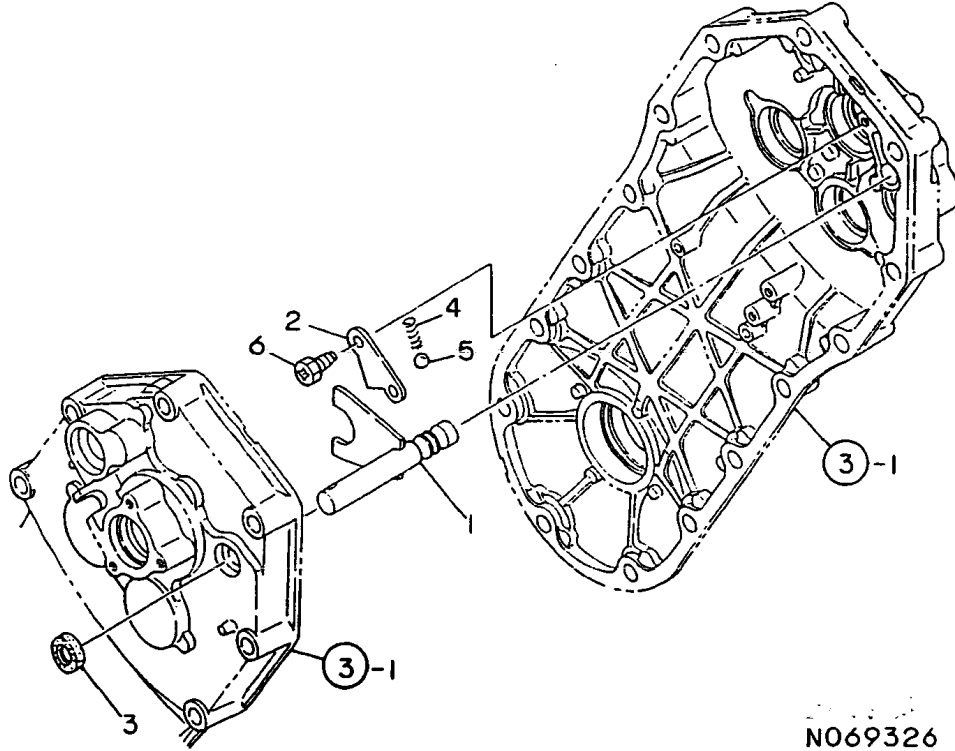
(D)=
(E)=
(F)=

No.	Lev.	Parts No.	Description	Q'ty						I	R
				(A)	(B)	(C)	(D)	(E)	(F)		
1	1	1A1860-20050	SHAFT,MAIN	1	1						
2	1	1A2090-23010	GEAR 16X26	1	1						
3	1	1A2099-23010	SHAFT 322E CMP.,MAIN		1						
4	1	24101-060024	BEARING, BALL 6002	1	1	1					
5	1	24101-062014	BEARING, BALL 6201	1	1	1					
6	1	24421-152507	SEAL, OIL TC152507	1	1	1					
7	1	1A2090-23100	SHAFT COMP.,COUNTER	1	1						
8	1	1A2099-23110	SHAFT 322E CMP,CUNTR		1						
9	1	24101-062014	BEARING, BALL 6201	2	2	2					
10	1	1A1860-20151	SHAFT COMP.,FINAL	1	1						
11	1	1A1860-20251	GEAR 39X19 COMPL.	1	1						
12	1	1A1860-20280	SHIM 15.22.1.0	2	2						
13	1	1A2099-23810	SHAFT 322E CMP,FINAL		1						
14	1	24101-062014	BEARING, BALL 6201	2	2	2					
15	1	1A1860-20180	CHAIN 12.7X56,ROLLER	1	1	1					
16	1	1A1860-20230	COLOR 26.32.17	1	1	1					
17	1	1A1860-20490	OIL SEAL 25.40	2	2						
17-1	1	1A1860-20491	OIL SEAL 25.40	2	2	2					N
(A=F001417) (B=FXXX)											
18	1	1A2090-24500	SHAFT ASSY	1	1						
18-1	1	1A2099-24000	AXLE COMPL.	1	1	1					S 1
(A=F000203) (B=F000203)											
19	1	24101-060054	BEARING, BALL 6005	2	2	2					

Remarks
1)D(HOLE)=REF.NO.18:8.5MM.
REF.NO.18-1:6.5MM.

Fig.5. CHANGE

5. CHANGE



N069326

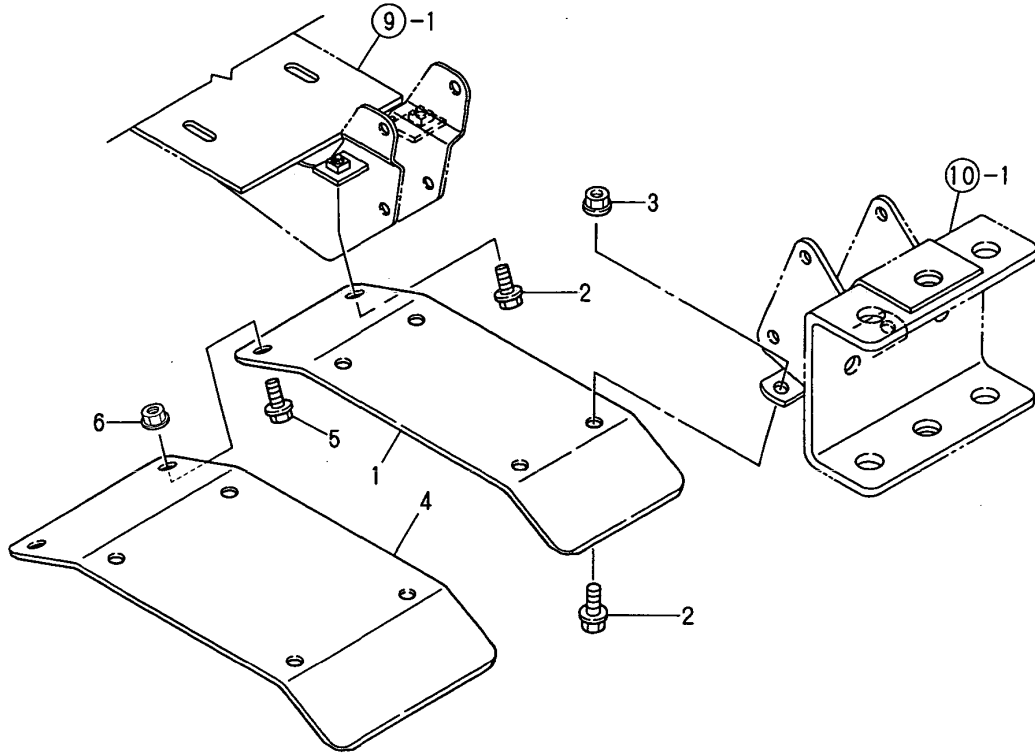
(A)=YK322
(B)=YK322E
(C)=YK322P

(D)=
(E)=
(F)=

No.	Lev.	Parts No.	Description	Qty						I	R
				(A)	(B)	(C)	(D)	(E)	(F)		
1	1	1A1750-21330	FORK COMP.CHANGE	1		1					
2	1	1A1750-21350	KEEP PLATE,BALL	1		1					
3	1	1A1104-28230	OIL SEAL 12184	1		1					
4	1	1E6150-56040	SPRING, FORK	1		1					
5	1	24190-100001	BALL, STEEL 5/16	1		1					
6	1	26476-060142	SCREW, TAPPING M6X14	2		2					

Fig.6. FENDER

6. FENDER



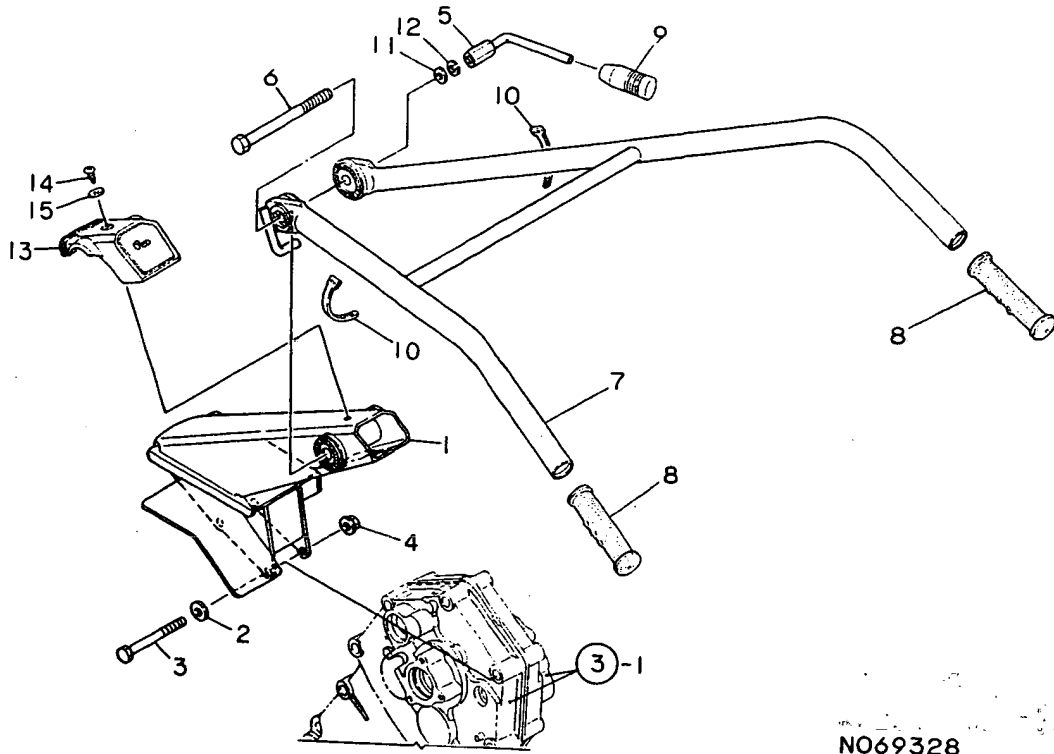
(A)=YK322
(B)=YK322E
(C)=YK322P

(D)=
(E)=
(F)=

No.	Lev.	Parts No.	Description	Qty						I	R
				(A)	(B)	(C)	(D)	(E)	(F)		
1	1	1A2090-32050	FENDER	2	2	2					
2	1	26106-080122	BOLT, M8X 12 PLATED	4	4	4					
3	1	26367-080002	NUT, M8	2	2	2					
4	1	1A2099-32060	COVER (C=F004067)			2					W
5	1	26107-080122	BOLT M 8X 12 PLATED (C=F004067)			6					W
6	1	26367-080002	NUT, M8 (C=F004067)			6					W

Fig.7. HANDLE

7. HANDLE



N069328

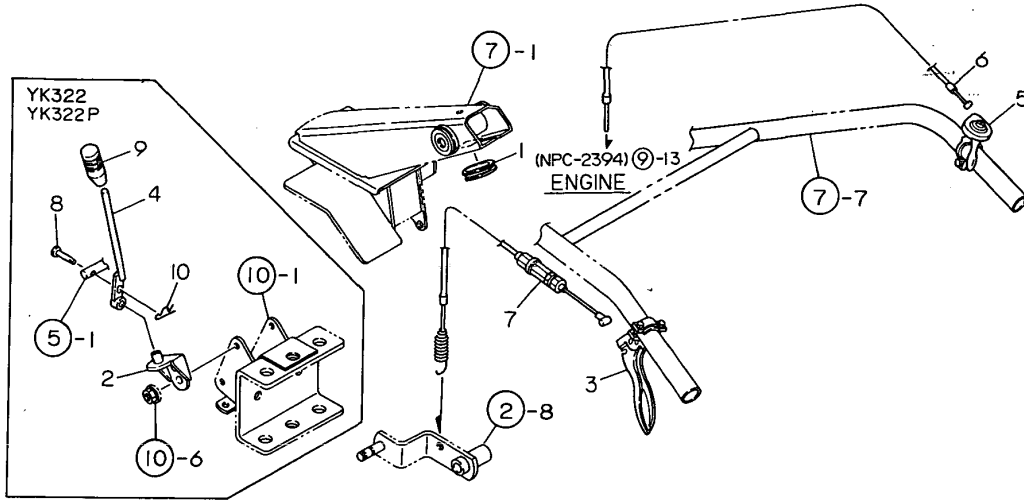
(A)=YK322
(B)=YK322E
(C)=YK322P

(D)=
(E)=
(F)=

No.	Lev.	Parts No.	Description	Q'ty						I	R
				(A)	(B)	(C)	(D)	(E)	(F)		
1	1	1A2099-51300	STAND COMP.,HANDLE	1	1	1					
2	1	22137-080000	WASHER, 8	2	2	2					
3	1	26116-080652	BOLT, M8X 65 PLATED	2	2	2					
4	1	26367-080002	NUT, M8	2	2	2					
5	1	1A2000-51400	LEVER CMP.,HANDLE LC	1	1	1					
6	1	1A2000-51430	BOLT 12X125	1	1	1					
7	1	1A2099-51500	HANDLE COMPL.	1	1	1					
8	1	192040-56220	GRIP,HANDLE	2	2	2					
9	1	1E6570-65750	GRIP,CONT.LEVER BLK.	1	1	1					
10	1	1E6102-84970	BAND 140,WIRE LOCK	2	2	2					
11	1	22137-120000	WASHER, 12	1	1	1					
12	1	22217-120000	WASHER, SPRING 12	1	1	1					
13	1	1A2130-51400	COVER,HANDLE FRAME	1	1	1					
14	1	1A1750-90050	SCREW 5X10,TAPPING	1	1						
14-1	1	1A1750-90060	SCREW 5X16,TAPPING	1	1	1					R
15	1	(A=FXXX) (B=FXXX) 1A1750-90150	WASHER 5,PLAIN	1	1	1					

Fig.8. TRAVELING CONTROL LEVER

8. TRAVELING CONTROL LEVER



NO69329

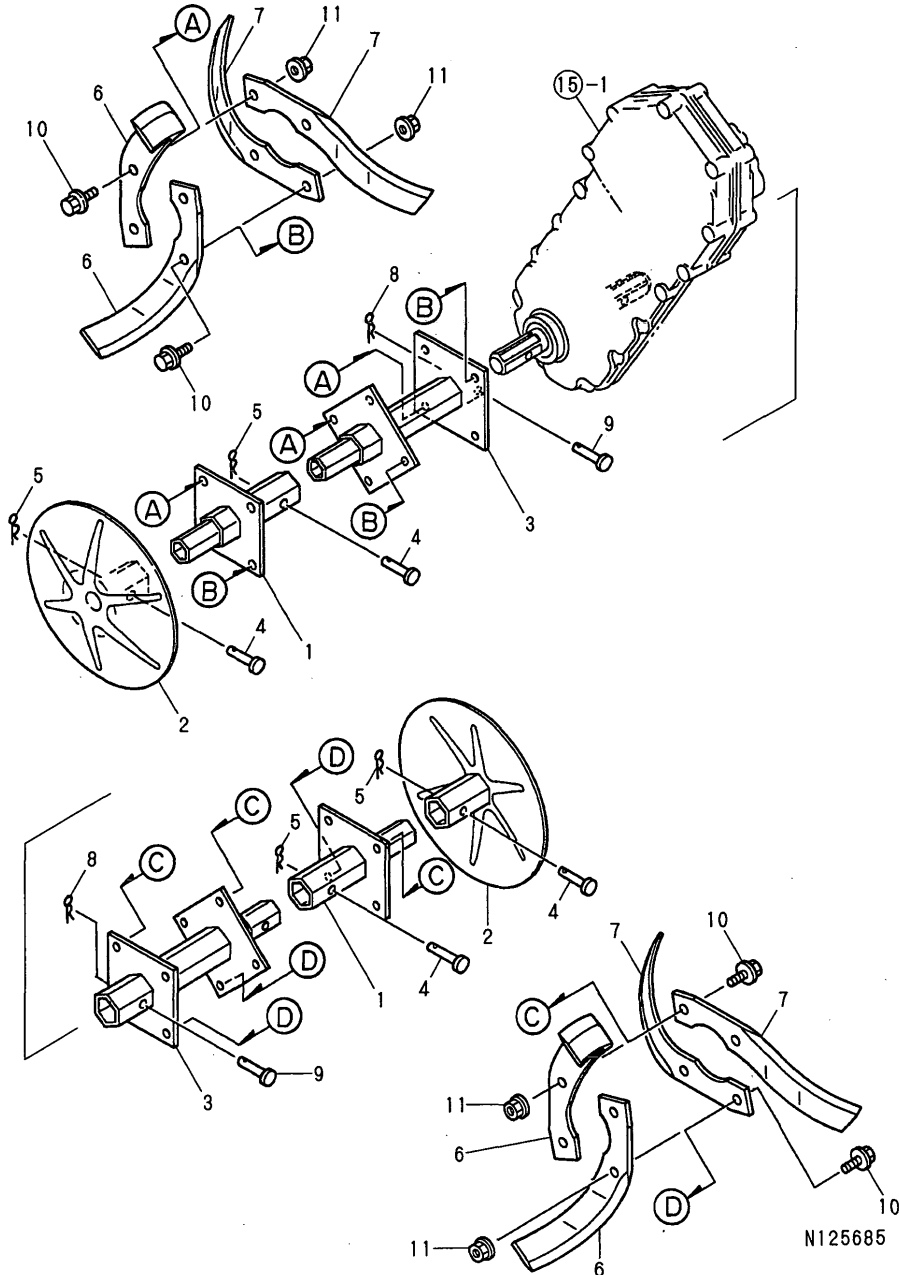
(A)=YK322
(B)=YK322E
(C)=YK322P

(D)=
(E)=
(F)=

No.	Lev.	Parts No.	Description	Q'ty						I	R
				(A)	(B)	(C)	(D)	(E)	(F)		
1	1	1A1470-40301	BAND,WIRE PROTECTIVE	1	1	1					
2	1	1A1750-51150	FULCRUM COMP.,CHANGE	1		1					
3	1	1A1107-54010	LVEVER MAIN CLUTCH	1	1	1					
4	1	1A2099-55100	LEVER 322 CMP,CHANGE	1		1					
5	1	1A1402-40750	LEVER,THROTTLE	1	1	1					
6	1	1A2130-55520	WIRE, ACCEL	1	1	1					
7	1	1A2099-55750	WIRE CMP,MAIN CLUTCH	1	1	1					
8	1	1A1310-56070	PIN 6X22	1		1					
9	1	1E6570-65750	GRIP,CONT.LEVER BLK.	1		1					
10	1	22372-060000	PIN, SNAP 6	1		1					

Fig.16. ROTOR SHAFT

16. ROTOR SHAFT



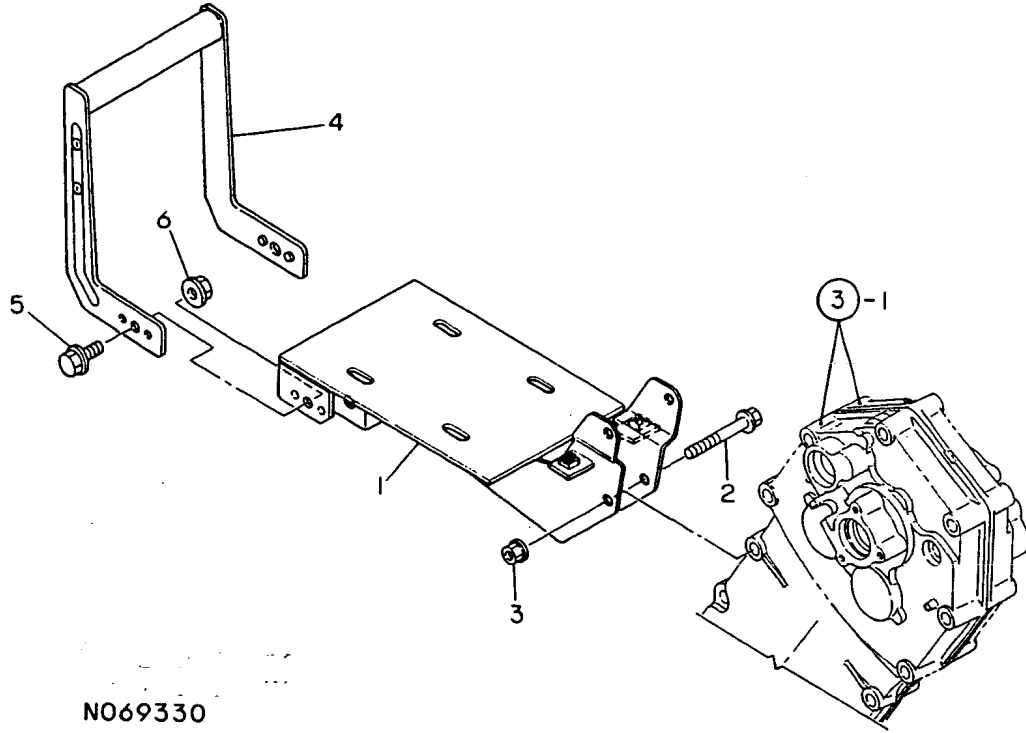
(A)=YK322
(B)=YK322E
(C)=YK322P

(D)=
(E)=
(F)=

No.	Lev.	Parts No.	Description	Qty						I	R
				(A)	(B)	(C)	(D)	(E)	(F)		
1	1	1S0090-11050	SHAFT COMPL.,EXTENS			2					
2	1	1S0090-11070	DISK COMP			2					
3	1	1S0090-11090	SHAFT COMPL.,ROTOR			2					
4	1	1A1540-46010	PIN 8X35,FLAT HEAD			4					
5	1	1A1540-46020	PIN 8,SNAP			4					
6	1	1A1402-91180	TAIN L ROTOR			12					
6-1	1	1A1402-91181	ROTOR TINE L (C=FXXXXXX)			12					N
7	1	1A1402-91190	TAIN R ROTOR			12					
7-1	1	1A1402-91191	ROTOR TINE R (C=FXXXXXX)			12					N
8	1	22372-060000	PIN, SNAP 6			2					
9	1	22486-060400	PIN, H 6X 40			2					
10	1	26107-080202	BOLT M 8X 20 PLATED			24					
11	1	26367-080002	NUT, M8			24					

Fig.9. ENGINE FRAME

9. ENGINE FRAME



N069330

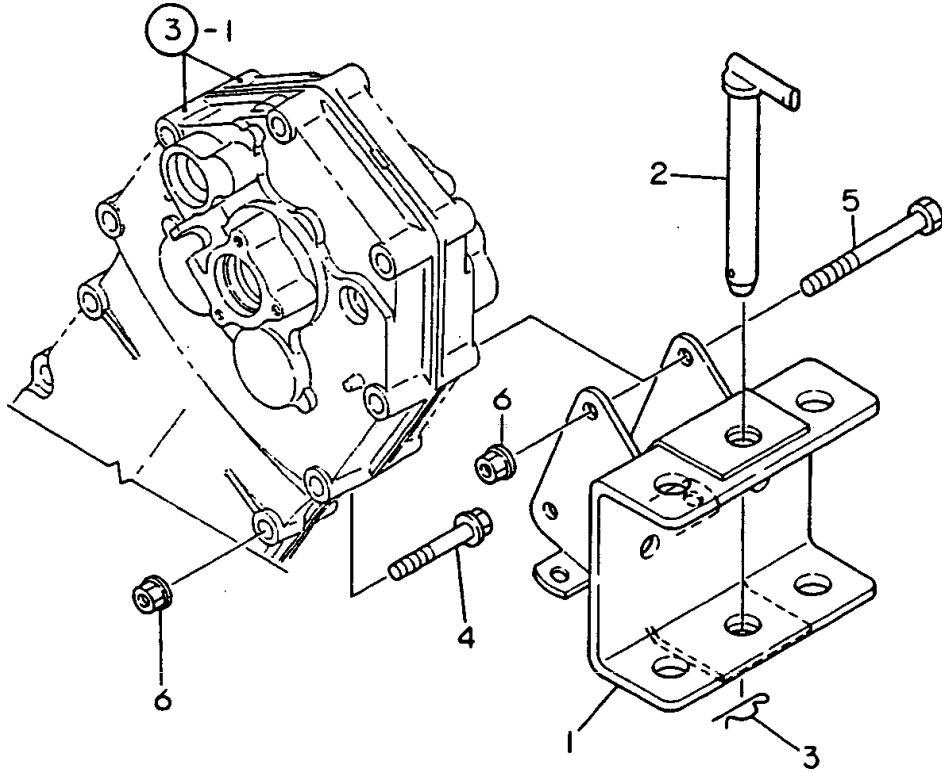
(A)=YK322
(B)=YK322E
(C)=YK322P

(D)=
(E)=
(F)=

No.	Lev.	Parts No.	Description	Q'ty						I	R
				(A)	(B)	(C)	(D)	(E)	(F)		
1	1	1A2099-61000	FRAME COMP.,ENGINE	1	1	1					
2	1	26107-080502	BOLT M 8X 50 PLATED	1	1	1					
3	1	26367-080002	NUT, M8	1	1	1					
4	1	1A1750-60800	BUMPER COMPL	1	1	1					
5	1	26107-080162	BOLT M 8X 16 PLATED	2	2	2					
6	1	26367-080002	NUT, M8	2	2	2					

Fig.10. HITCH

10. HITCH



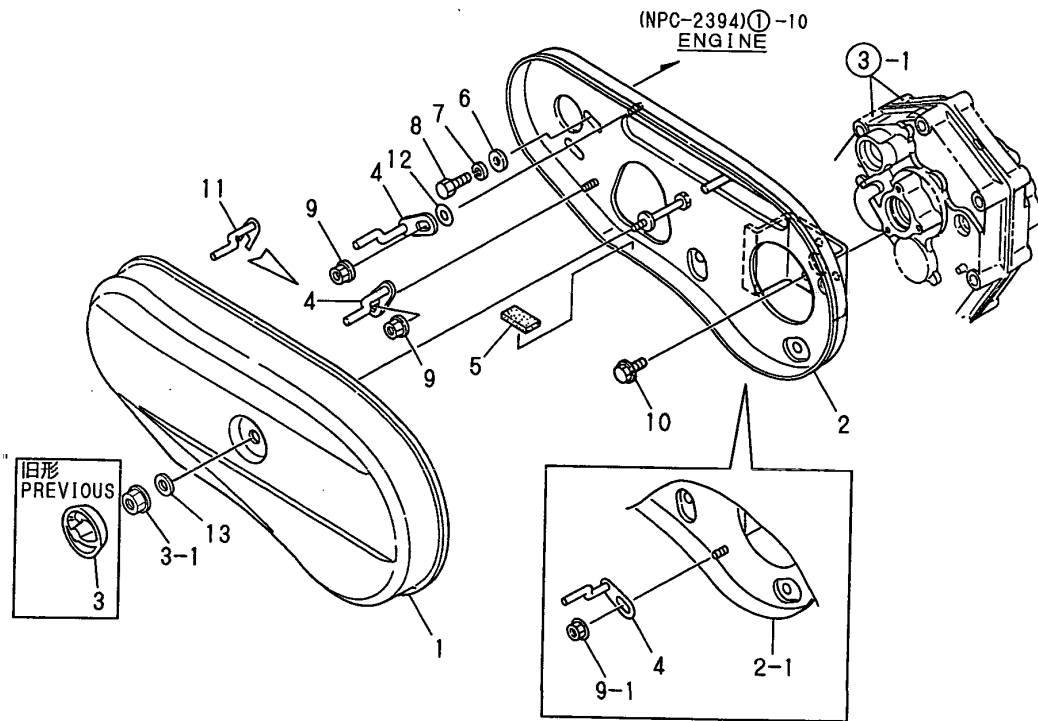
(A)=YK322
(B)=YK322E
(C)=YK322P

(D)=
(E)=
(F)=

No.	Lev.	Parts No.	Description	Qty						I	R
				(A)	(B)	(C)	(D)	(E)	(F)		
1	1	1A2099-61200	HITCH 95-A COMPL.	1	1	1					
2	1	1A1040-81100	PIN, HITCH	1	1	1					
3	1	22360-160000	PIN, SNAP 16	1	1	1					
3-1	1	1A2860-61450	SNAP PIN 16	1	1	1					N
		(A=FXXXXX) (B=FXXXXX) (C=FXXXXX)									
4	1	26107-080452	BOLT M 8X 45 PLATED	1	1	1					
5	1	26117-080752	BOLT M 8X 75 PLATED	2	2						
5-1	1	26107-080702	BOLT M 8X 70 PLATED	2	2	2					R
		(A=F000101) (B=F000101)									
6	1	26367-080002	NUT, M8	3	3	3					

Fig.11. HANDLE COVER

11. HANDLE COVER



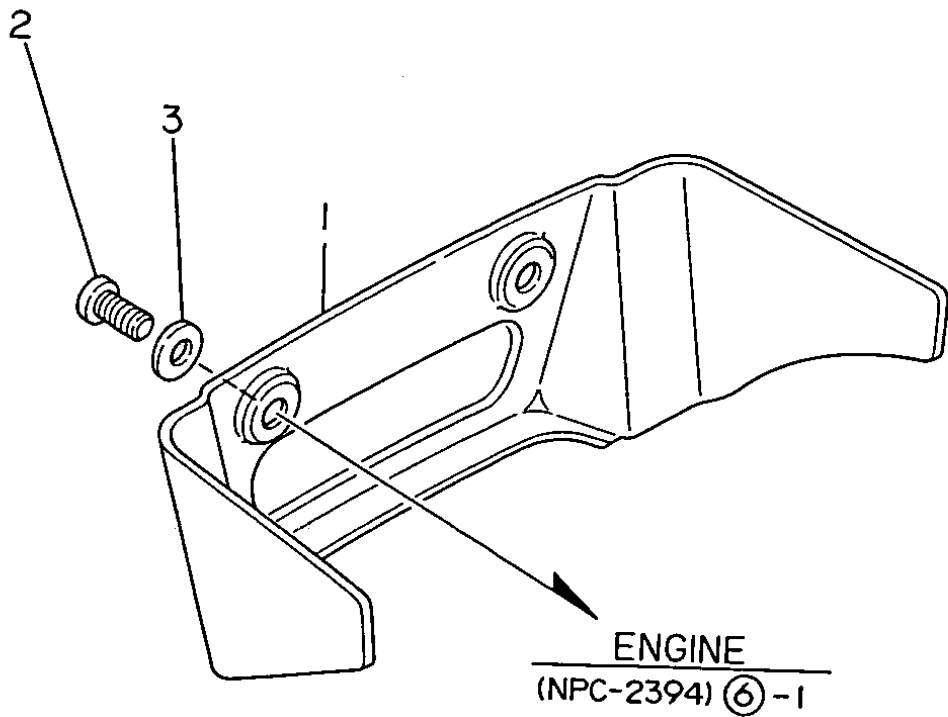
(A)=YK322
(B)=YK322E
(C)=YK322P

(D)=
(E)=
(F)=

No.	Lev.	Parts No.	Description	Q'ty						I	R
				(A)	(B)	(C)	(D)	(E)	(F)		
1	1	1A2130-62010	COVER, BELT	1	1	1					
2	1	1A2099-62100	COVER COMP.,BACK	1	1						
2-1	1	1A2099-62101	COVER COMP.,BACK	1	1	1					N
3	1	1A2000-62300	KNOB,BELT COVER	1	1	1					
3-1	1	26367-080002	NUT, M8	1	1	1					S
4	1	1A2099-62400	RETAINER 322 CM,BELT	2	2	2					
5	1	1A2000-62481	CUSHION	1	1						Z
6	1	22137-080000	WASHER, 8	2	2	2					
7	1	22217-080000	WASHER, SPRING 8	2	2	2					
8	1	26117-080162	BOLT M 8X 16 PLATED	2	2	2					
9	1	26367-060002	NUT, M6	2	2	2					
9-1	1	26367-060002	NUT, M6	3	3	3					K
10	1	1A1750-90200	SCREW 6X12,COLLAR HD	3	3	3					
11	1	1A2099-62420	RETAINER 322BCM BELT	1	1	1					W
12	1	22137-060000	WASHER, 6	1	1	1					
13	1	22157-080000	WASHER, 8	1	1	1					W

Fig.12. BONNET

12. BONNET



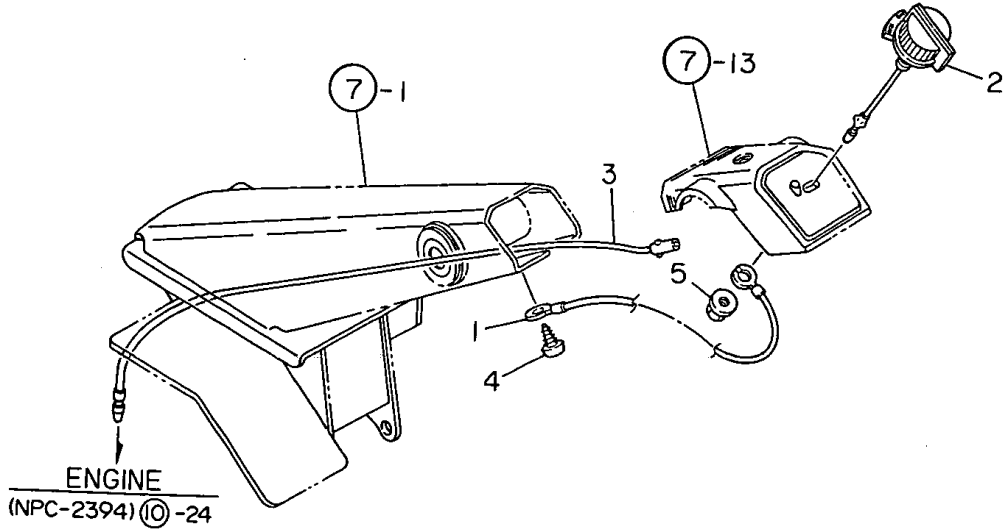
(A)=YK322
(B)=YK322E
(C)=YK322P

(D)=
(E)=
(F)=

No.	Lev.	Parts No.	Description	Qty						I	R
				(A)	(B)	(C)	(D)	(E)	(F)		
1	1	1A2130-64010	COVER,FRONT	1	1						
1-1	1	1A2099-64010	COVER,RED FRONT	1	1	1					N
		(A=F000101) (B=F000101)									
2	1	1A1750-90050	SCREW 5X10,TAPPING	2	2	2					
3	1	1A1750-90150	WASHER 5,PLAIN	2	2	2					

Fig.13. ELECTRICAL PARTS

13. ELECTRICAL PARTS



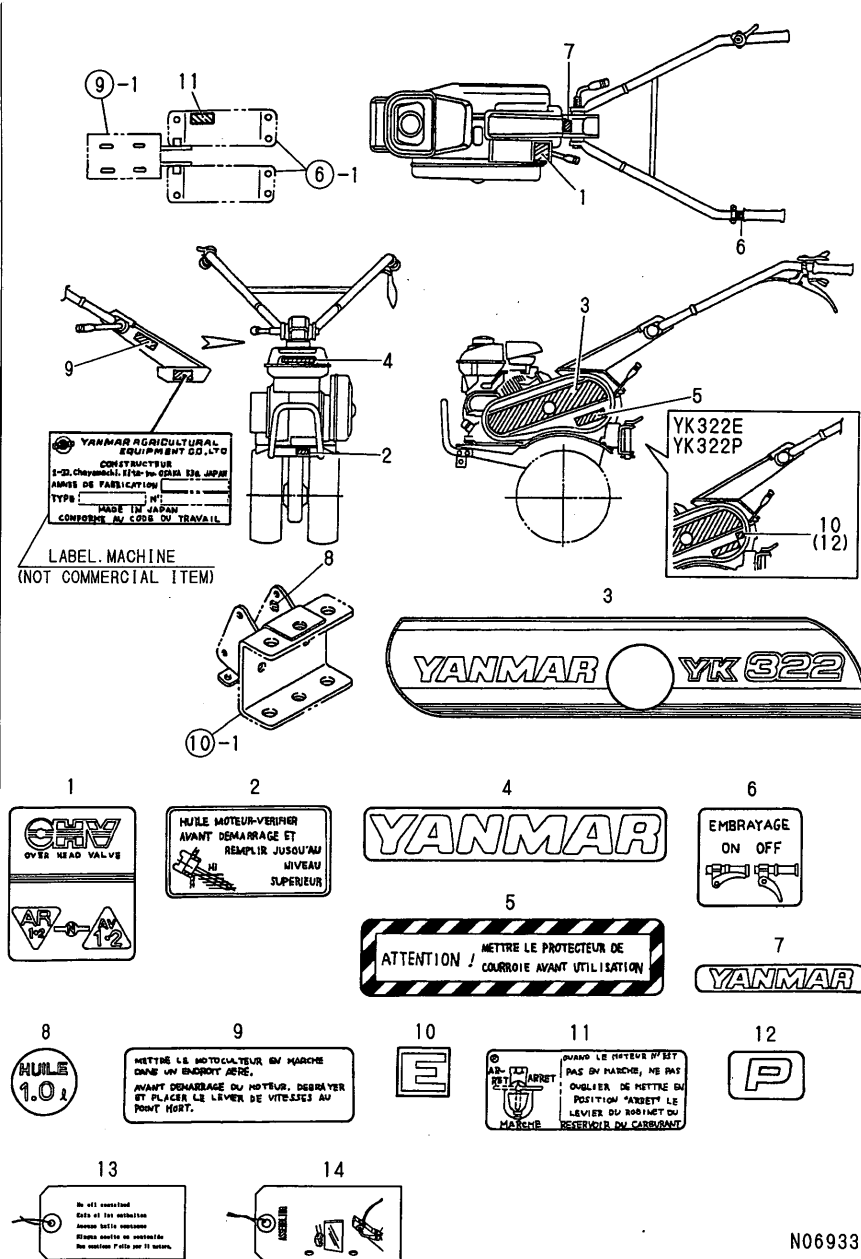
(A)=YK322
(B)=YK322E
(C)=YK322P

(D)=
(E)=
(F)=

No.	Lev.	Parts No.	Description	Q'ty						I	R
				(A)	(B)	(C)	(D)	(E)	(F)		
1	1	1A1750-40850	CORD,EARTH	1	1	1					
2	1	1A1470-40900	SWITCH,STOP	1	1						
2-1	1	1A1750-40800	SWITCH,STOP	1	1	1					N
3	1	(A=FXXX) 1A2000-83100	(B=FXXX) CORD,STOP SWITCH	1	1	1					
4	1	1A1750-90050	SCREW 5X10,TAPPING	1	1						
4-1	1	(A=F002879) 1A1750-90060	(B=FXXX) SCREW 5X16,TAPPING	1	1	1					R
5	1	26367-080002	NUT, M8	1	1	1					

Fig.14. LABELS

14. LABELS



(A)=YK322
(B)=YK322E
(C)=YK322P

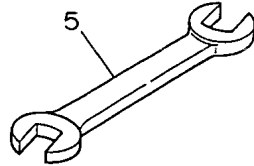
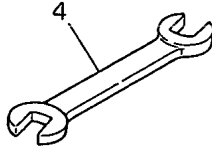
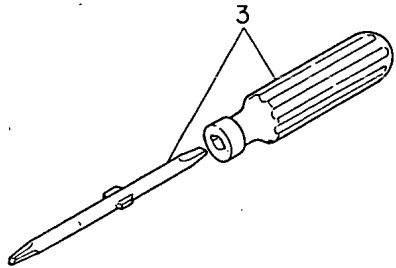
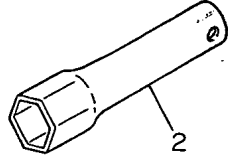
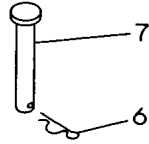
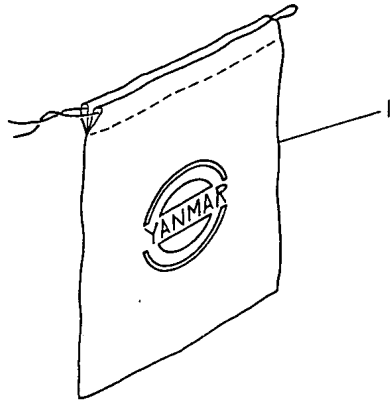
(D)=
(E)=
(F)=

No.	Lev.	Parts No.	Description	Qty						I	R
				(A)	(B)	(C)	(D)	(E)	(F)		
1	1	1A2099-86220	LABEL 322,CHANGE	1		1					
2	1	1A1750-83350	LABEL,ENGINE OIL	1	1						
2-1	1	1A2099-86820	LABEL,ENG.OIL,ITA	1	1	1					R
3	1	1A2099-86100	LABEL 322,BELT COVER	1	1	1					
4	1	1A2130-86320	LABEL,FUEL TANK	1	1	1					
5	1	1A2099-86200	LABEL,BELT CVR.SAFETY	1	1						
5-1	1	1A2099-86300	LABEL,CVR.SAFETY	1	1	1					R
6	1	1A2099-86210	LABEL,MAIN CLUTCH	1	1						
6-1	1	1A2099-86340	LABEL,MAIN CLUTCH	1	1	1					R
7	1	1A2130-86500	LABEL,HANDLE COVER	1	1	1					
8	1	1A2138-86700	LABEL 1.0,OIL	1	1						
8-1	1	1A2138-86701	LABEL 1,OIL	1	1	1					R
9	1	1A1107-88130	LABEL	1	1						
9-1	1	1A2099-86320	LABEL,CAUTION	1	1	1					R
10	1	1A1540-88810	LABEL			1					
11	1	160602-07800	LABEL,FUEL COCK	1	1						
11-1	1	1A2099-86360	LABEL,FUEL COCK	1	1	1					R
12	1	1A2138-86150	MARK P						1		
13	1	1A2099-86900	LABEL,OIL CAUTION	1	1	1					W

N069335

Fig.15. TOOLS

15. TOOLS



N069336

(A)=YK322
(B)=YK322E
(C)=YK322P

(D)=
(E)=
(F)=

No.	Lev.	Parts No.	Description	Q'ty						I	R
				(A)	(B)	(C)	(D)	(E)	(F)		
1	1	1A1540-87030	TOOL BAG	1	1						
1-1	1	1A1750-83900	TOOL BAG	1	1	1					R
		(A=FXXX) (B=FXXX)									
2	1	160110-92700	WRENCH, 21 L140	1	1	1					
3	1	160330-92730	DRIVE, SCREW	1	1						
3-1	1	1D2040-87060	SCREWDRIVER, COMBINAT	1	1	1					R
		(A=FXXX) (B=FXXX)									
4	1	28110-100120	SPANNER, 10X12	1	1	1					
5	1	28110-120140	SPANNER, 12X14	1	1	1					
6	1	22372-060000	PIN, SNAP 6	2	2	2					W
		(A=FXXX) (B=FXXX)									
7	1	22487-060400	PIN 6X 40	2	2	2					W
		(A=FXXX) (B=FXXX)									

Parts No. Index

Parts No.	Fig. No.	Ref. No.
160110-92700	15	2
160330-92730	15	3
160602-07800	14	11
192040-56220	7	8
1A1040-81100	10	2
1A1104-28230	5	3
1A1107-54010	8	3
1A1107-88130	14	9
1A1310-56070	8	8
1A1400-16800	2	2
1A1402-40750	8	5
1A1402-91180	16	6
1A1402-91181	16	6 -1
1A1402-91190	16	7
1A1402-91191	16	7 -1
1A1470-20090	3	3
1A1470-40301	8	1
1A1470-40900	13	2
1A1540-11000	2	1
1A1540-14000	2	9
1A1540-46010	16	4
1A1540-46020	16	5
1A1540-87030	15	1
1A1540-88810	14	10
1A1750-20010	3	1
1A1750-20030	3	2
1A1750-20410	3	4
1A1750-20421	3	5
1A1750-20431	3	6
1A1750-21330	5	1
1A1750-21350	5	2
1A1750-40800	13	2 -1
1A1750-40850	13	1
1A1750-51150	8	2
1A1750-60800	9	4
1A1750-83350	14	2
1A1750-83900	15	1 -1
1A1750-90050	7	14
	12	2
	13	4
1A1750-90060	7	14 -1
	13	4 -1
1A1750-90150	7	15
	12	3
1A1750-90200	11	10
1A1860-20050	4	1
1A1860-20151	4	10
1A1860-20180	4	15
1A1860-20230	4	16
1A1860-20251	4	11

Parts No.	Fig. No.	Ref. No.
1A1860-20280	4	12
1A1860-20440	3	7
1A1860-20450	3	8
1A1860-20490	4	17
1A1860-20491	4	17 -1
1A2000-13190	2	6
1A2000-51400	7	5
1A2000-51430	7	6
1A2000-62300	11	3
1A2000-62481	11	5
1A2000-83100	13	3
1A2090-12000	1	7
1A2090-13030	2	5
1A2090-23010	4	2
1A2090-23100	4	7
1A2090-24500	4	18
1A2090-32050	6	1
1A2099-12010	13	8
1A2099-13400	2	7
1A2099-13500	2	8
1A2099-23010	4	3
1A2099-23110	4	8
1A2099-23810	4	13
1A2099-24000	4	18 -1
1A2099-32060	6	4
1A2099-51300	7	1
1A2099-51500	7	7
1A2099-55100	8	4
1A2099-55750	8	7
1A2099-61000	9	1
1A2099-61200	10	1
1A2099-62100	11	2
1A2099-62101	11	2 -1
1A2099-62400	11	4
1A2099-62420	11	11
1A2099-64010	12	1 -1
1A2099-86100	14	3
1A2099-86200	14	5
1A2099-86210	14	6
1A2099-86220	14	1
1A2099-86300	14	5 -1
1A2099-86320	14	9 -1
1A2099-86340	14	6 -1
1A2099-86360	14	11 -1
1A2099-86820	14	2 -1
1A2099-86900	14	13
1A2130-11100	1	1
1A2130-51400	7	13
1A2130-55520	8	6
1A2130-62010	11	1

Parts No.	Fig. No.	Ref. No.
1A2130-64010	12	1
1A2130-86320	14	4
1A2130-86500	14	7
1A2138-86150	14	12
1A2138-86700	14	8
1A2138-86701	14	8 -1
1A2860-61450	10	3 -1
1C6020-73090	1	10
	2	3
1D2040-87060	15	3 -1
1E6102-84970	7	10
1E6150-56040	5	4
1E6570-65750	7	9
	8	9
1S0090-11050	16	1
1S0090-11070	16	2
1S0090-11090	16	3
22137-060000	11	12
22137-080000	1	2
	2	10
	7	2
	11	6
22137-120000	7	11
22157-080000	11	13
22217-080000	1	3
	11	7
22217-120000	7	12
22242-000100	2	11
22360-160000	10	3
22372-060000	8	10
	15	6
	16	8
22486-060400	16	9
22487-060400	15	7
22550-040201	1	9
24101-060024	4	4
24101-060054	4	19
24101-062014	4	5
		9
		14
24190-100001	5	5
24421-152507	4	6
25122-003101	1	11
26106-080122	6	2
26107-060122	1	12
	2	4
26107-080122	6	5
26107-080162	2	12
	9	5
26107-080202	16	10

Parts No.	Fig. No.	Ref. No.
26107-080252	3	9
26107-080452	10	4
26107-080502	9	2
26107-080702	2	13
		14 -1
	10	5 -1
26116-080652	7	3
26117-080162	11	8
26117-080352	1	4
26117-080752	2	14
	10	5
26367-060002	11	9
		9 -1
26367-080002	1	5
	2	15
	3	10
	6	3
	7	4
	9	3
		6
	10	6
	11	3 -1
	13	5
	16	11
26476-060142	5	6
26717-080002	1	6
28110-100120	15	4
28110-120140	15	5